

Route 48

It is 1230 hours on a sunny spring afternoon. You are on patrol, heading westbound on Rte. 48 toward the airport. A silver Toyota Corolla passes you heading the other direction going at least 85mph. You activate your lights and cross the grass median strip to initiate a traffic stop. For a moment it looks like this will turn into a pursuit, but eventually the Toyota pulls over less than a mile west of the Exit 26 overpass, and you stop about 10 yards back. Along the freeway there is about 50 feet of tall grass up to a thick forest. You notice there is an Uber decal in the rear window of the Toyota. The front passenger window is down as you approach on the passenger side. The driver is a middle-aged male with a beard; he looks Middle Eastern. In the back seat is a large man with a dangerous look in his eyes. He looks very stocky and solid in mechanic's coveralls and a ball cap. See Figure 1.

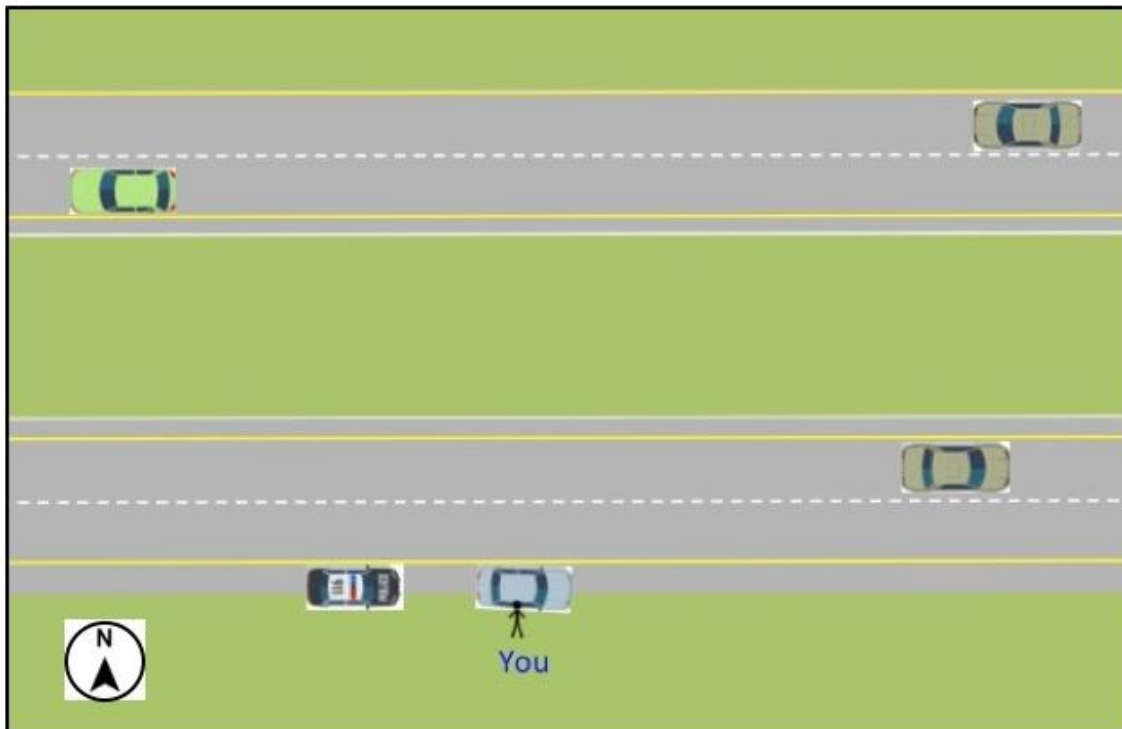


Figure 1.

The driver is acting very nervous when you ask for his license and registration. His English is poor and he is very excited, so it is difficult to understand him. He seems to be trying to move his eyes to direct your attention to the back seat where you now notice the passenger seems to be pulling something out of a gym bag at his feet. Even before the muzzle is out of the bag, you recognize it is an M4 carbine. You yell at him to freeze as you draw your weapon, but he continues to withdraw the carbine. You hear the driver scream in broken English, "He wants to

kill you! ” You fire into the back seat as you simultaneously bolt toward the rear. A burst of automatic fire answers you, shattering the window in your wake.

You take cover at the back of your patrol car and call in the situation. You’re sure you must have hit him. See Figure 2.

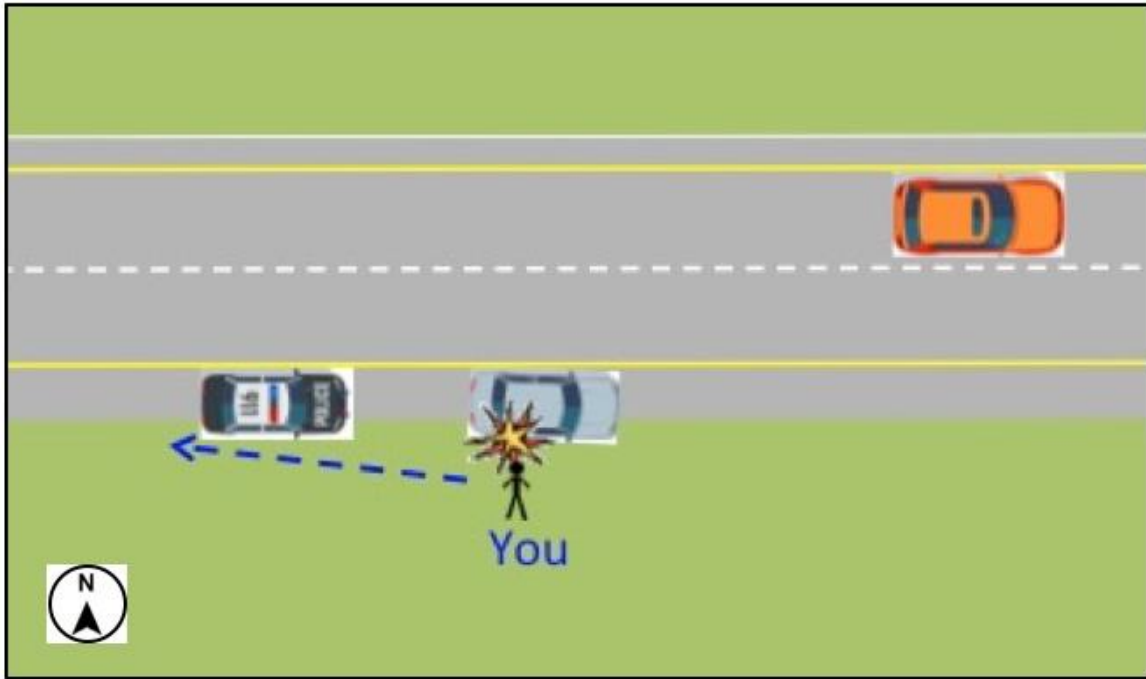


Figure 2.

Decision Point #1

1.1. *What is your initial assessment of the situation?* Rank the following options from 1 (most likely) to 5 (least likely).

<input type="checkbox"/>	a. Two suspects are fleeing the scene of a crime.
<input type="checkbox"/>	b. The gunman in the back seat has taken the driver hostage.
<input type="checkbox"/>	c. The gunman in the back seat intends to initiate a deadly shootout with police.
<input type="checkbox"/>	d. I don't know.

Rationale. Please provide a brief rationale for your decision.

1.2. *What are your objectives?* Rank the following options from 1 (most important) to 5 (least important).

<input type="checkbox"/>	a. Protect the Uber driver.
<input type="checkbox"/>	b. Survival.

	c. Isolate the scene to protect passing motorists.
	d. Get reinforcements.
	e. Incapacitate the shooter.

Rationale. Please provide a brief rationale for your decision.

--

The Scenario Continues

You radio “Shots fired” and request backup. Around the passenger side of your patrol car your field of vision is not good, but you can make out the driver’s door opening. You switch to the driver’s side in time to see the driver exit the car into the right lane and bolt around the front of the car. Now you see the gunman exit the driver’s side also into the right lane and fire a burst at the fleeing driver, who screams as he disappears into the grassy verge beside the highway. The gunman turns and fires another burst in your direction, driving you back to cover. A car speeds by on your left, its horn blaring as it swerves around the gunman, who fires a burst at the disappearing car and then turns and fires back at you. See Figure 3.

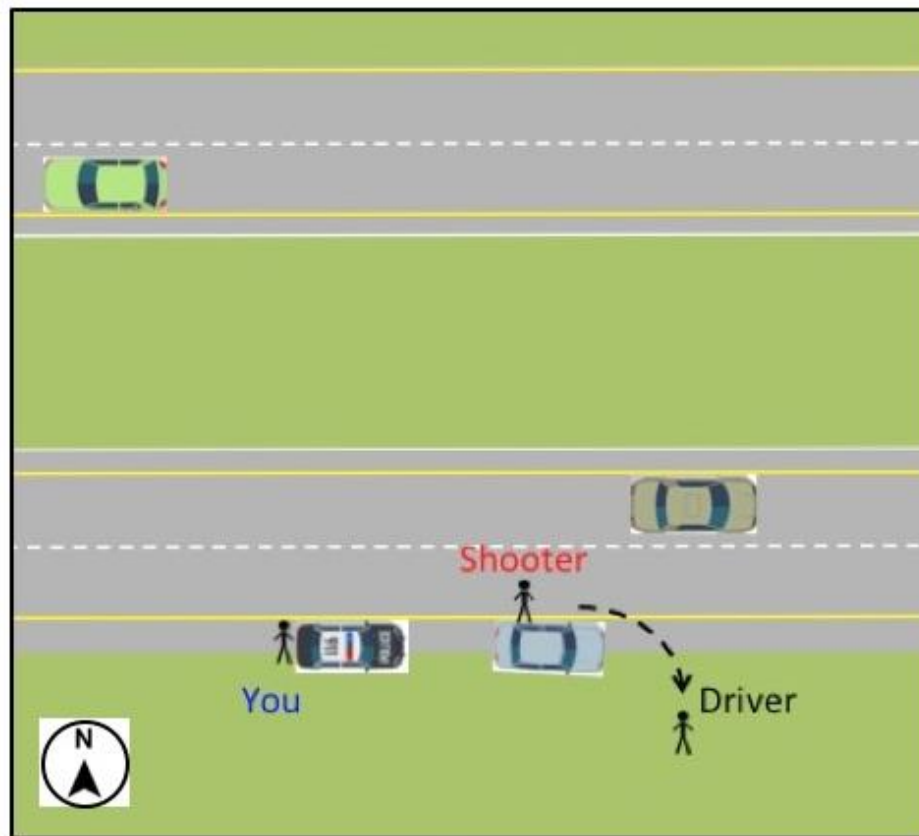


Figure 3.

Now there is a lull, and you can hear the driver wailing unintelligibly, although you cannot see him in the tall grass. Two units report they are responding, Officer Newsome from the west and Officer Davis from the east. Both report they are no more than two minutes out.

Decision Point #2

2.1. *What do you tell Newsome (responding from the west) to do?* Rank the following options from 1 (best) to 3 (worst).

	a. Join you at the scene.
	b. Set up a roadblock about a mile west to isolate the scene.

Rationale. Please provide a brief rationale for your decision.

--

2.2. *What do you tell Davis (responding from the east) to do?* Rank the following options from 1 (best) to 3 (worst).

	a. Approach the scene from the east in order to engage the gunman in a crossfire with his long rifle.
	b. Set up a roadblock at the Exit 26 offramp to isolate the scene.
	c. Take up a position on the Exit 26 overpass to see if he can get a shot with his long rifle.

Rationale. Please provide a brief rationale for your decision.

--

The Scenario Continues

You hear a soft, metallic clack, which you perceive as an empty magazine hitting the pavement. You step out quickly, get a good sight picture and fire off several rounds. He seems to flinch, staggers against the car momentarily, but then seems to recover. You notice he has the gym bag slung over one shoulder now; he has reached inside to extract another magazine, which he is inserting into the carbine; he fires another burst at you, driving you back to cover. You chance another look and glimpse him disappearing to a covered position in front of the Toyota. He now also seems to have a pistol in one hand. The driver continues to wail pitifully in a foreign language. See Figure 4.

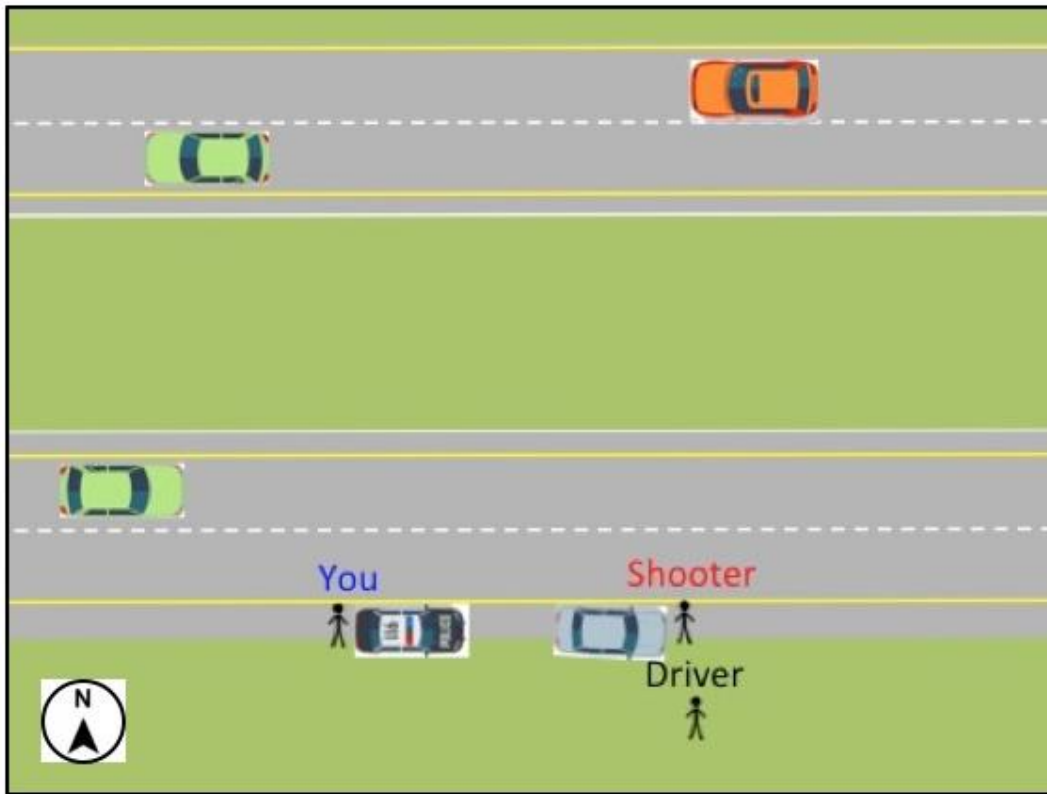


Figure 4.

Decision Point #3

What do you do about the Uber driver? Rank the following options from 1 (best) to 6 (worst).

	a. Work your way to the driver's position.
	b. Tell him to be quiet and stay hidden in the tall grass.
	c. Tell him to stay hidden and work his way east to get away from the scene.
	d. Tell him to work his way toward you.
	e. Tell him to get to the woods for concealment.
	f. Nothing.

Rationale. Please provide a brief rationale for your decision.

The Scenario Continues

You try to start a dialogue with the gunman, but his reply is to fire at you. Cars continue to pass in both directions. The gunman alternates between firing at you at your position at the rear driver's side of your

patrol car and firing at passing vehicles. The driver continues to wail in the grassy verge, and every so often the gunman fires a round in that direction and yells, "Shut up!"

Davis reports he has set up a roadblock at Exit 26 a mile to the east. Newsome reports she has done the same about a mile west. Dispatch reports that on-duty SWAT officers are 10-15 minutes away.

Decision Point #4

What is the most important information to relay to SWAT officers responding? Rank the following options from 1 (most important) to 5 (least important).

	a. The last known location of the driver.
	b. That the gunman is wearing body armor.
	c. That the gunman will not surrender but seems intent on a shootout.
	d. That the Exit 26 overpass may provide a viable firing position.
	e. That SWAT's best option may be to run the gunman over with their vehicle.

Rationale. Please provide a brief rationale for your decision.

--

The Scenario Continues

The gunman starts walking toward you along the driver's side, firing as he approaches. You shift to the passenger's side to try to keep the vehicle between him and you. The firing stops. You hazard another look and see the gunman getting into the Toyota, behind the wheel.

Decision Point #5

What do you do? Rank the following options from 1 (best) to 6 (worst).

	a. Get back in your vehicle, ready to pursue.
	b. Report that the gunman is back in the Toyota, driving east and alone in the car.
	c. Sprint to the Toyota on the driver side with the intent of shooting the gunman.
	d. Sprint to the Toyota on the passenger side with the intent of shooting the gunman.
	e. Engage from your current position.
	f. Wait for him to depart, report, and then go check on the driver.

Rationale. Please provide a brief rationale for your decision.

--

--